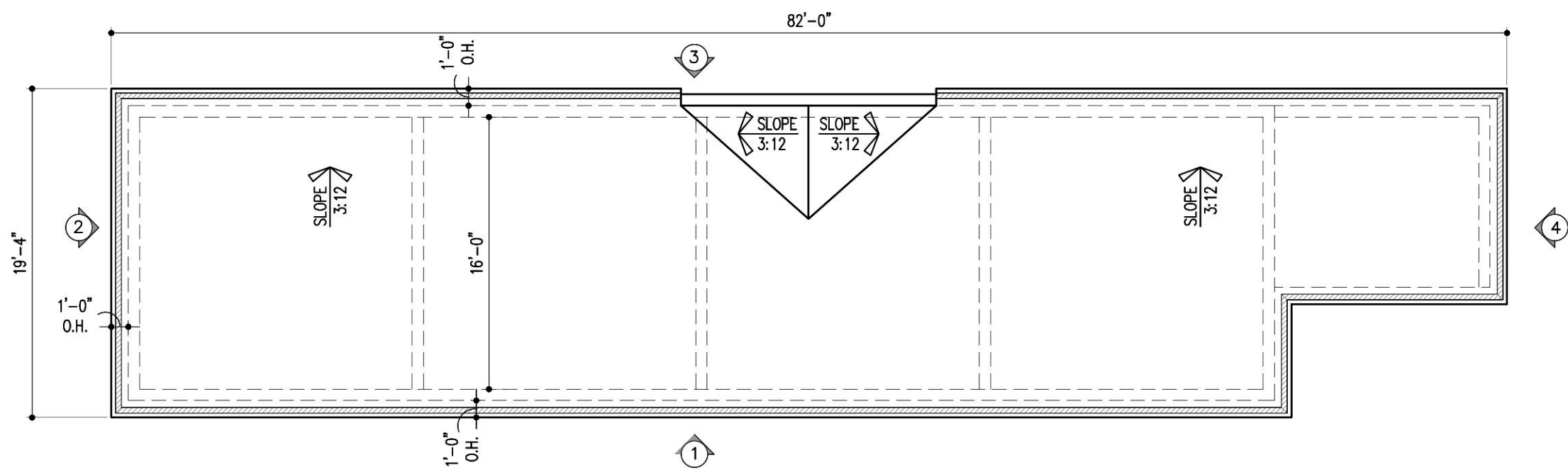


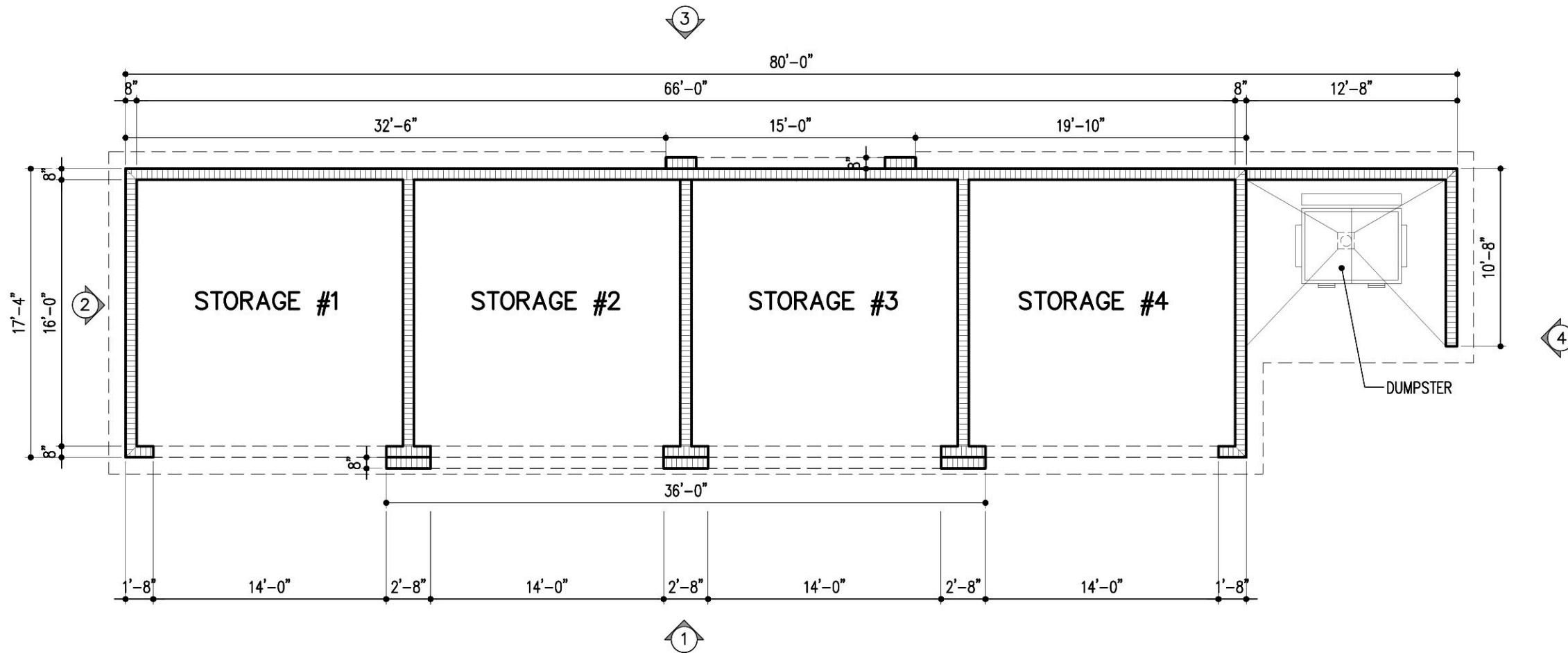
DRC

PZ23-12000017

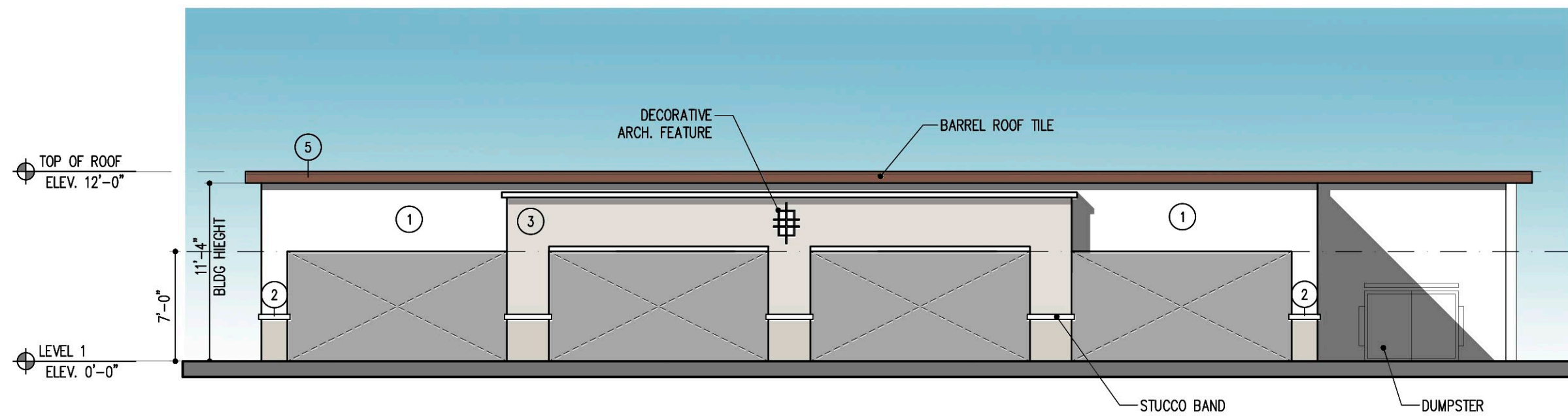
03/05/2025



ROOF PLAN



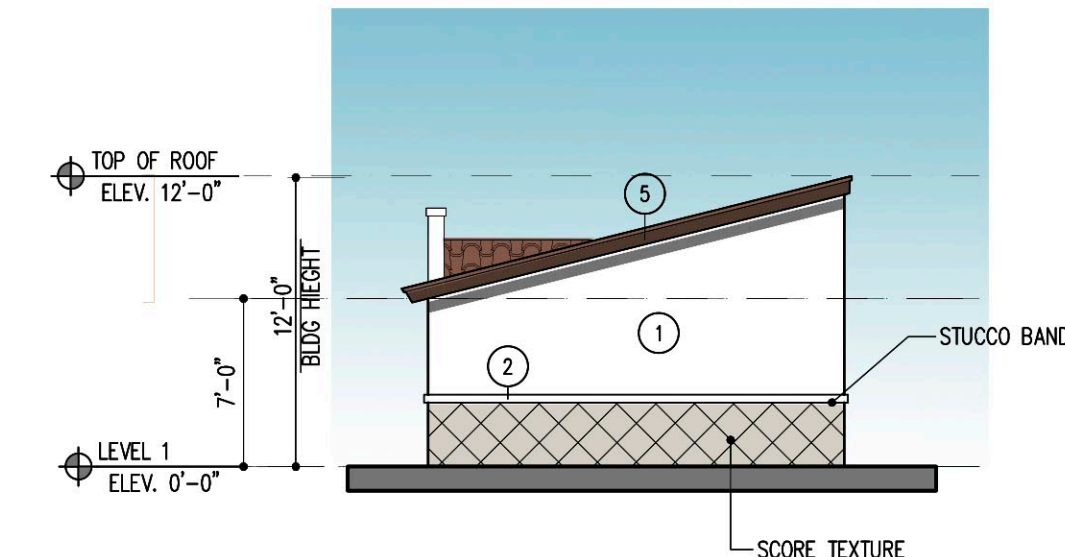
FLOOR PLAN



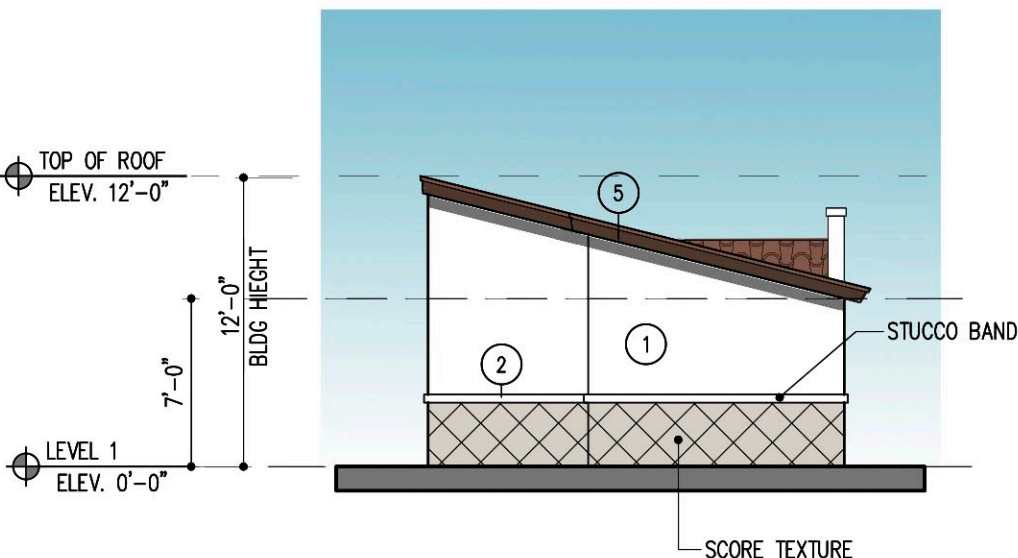
1 FRONT ELEVATION



3 REAR ELEVATION



2 SIDE ELEVATION



4 SIDE ELEVATION

COLOR SCHEME KEY

- | | |
|---|--|
| 1 | MAIN
SW 7757
HIGH REFLECTIVE
WHITE |
| 2 | TRIMS
SW 7631
CITY LOFT |
| 3 | DETAIL COLOR
SW 7014
EIDER WHITE |
| 4 | RAILINGS/WINDOWS/
DOOR FRAMES
SW 7048
URBANE BRONZE |
| 5 | ROOFS
BARREL TILES
RANGE OF BROWN |

GOLF COVERED STORAGE - PLAN AND ELEVATIONS

SCALE: 1/8"=1'-0"

DRAWN
CONTRACT DATE 10/12/22
SCALE AS SHOWN
JOB NO. 2181.PRJ

SHEET TITLE:
COVERED STORAGE
PLANS AND ELEVATIONS

SHEET NUMBER:

GCS-2.1

ARCHITECT'S BUILDING CODE STATEMENT/ TO THE BEST OF THE ARCHITECT'S KNOWLEDGE THE PLANS AND SPECIFICATIONS COMPLY WITH THE FLORIDA BUILDING CODE SEVENTH EDITION (2020) AND THE APPLICABLE FIRE SAFETY STANDARDS AS DETERMINED BY THE LOCAL AUTHORITY AND CHAPTER 633 FLORIDA STATUTES.

MSA ARCHITECTS, INC.
AAC000895

8950 SW 74th COURT
SUITE 1513
MIAMI, FLORIDA 33156
(305) 273-9911

MSA ARCHITECTS
ARCHITECTURE & PLANNING

COPYRIGHT © 2022 MSA ARCHITECTS, INC. ALL RIGHTS RESERVED. NO PART OF THESE PLANS OR SPECIFICATIONS MAY BE REPRODUCED OR TRANSMITTED IN ANY FORM OR BY ANY MEANS, ELECTRONIC OR MECHANICAL, WITHOUT PERMISSION IN WRITING BY THE ARCHITECT.

OAKS @ PALM AIRE

FOR:
MORGUARD
LOCATED AT:
POMPANO BEACH, FLORIDA

JOSE I. SAUMELL
AR0013085

BY